

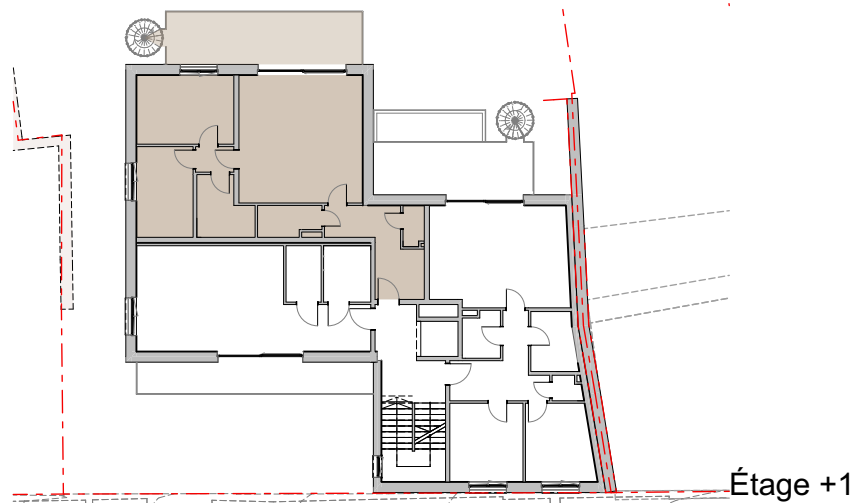
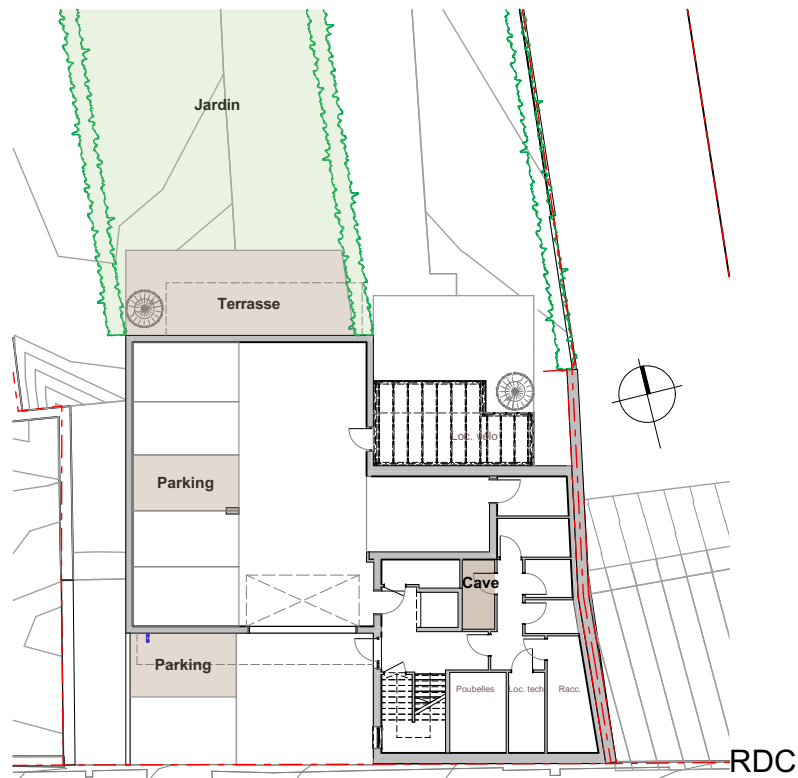


Étage +1

Résidence
11, Route de Gilsdorf
L-9234 Diekirch

Étage +1	
Surface habitable:	90.71 m ²
Surface terrasse:	63.40 m ²
Surface cave:	4.99 m ²
Surface parking:	28.01 m ²
Surface jardin:	269.06 m ²

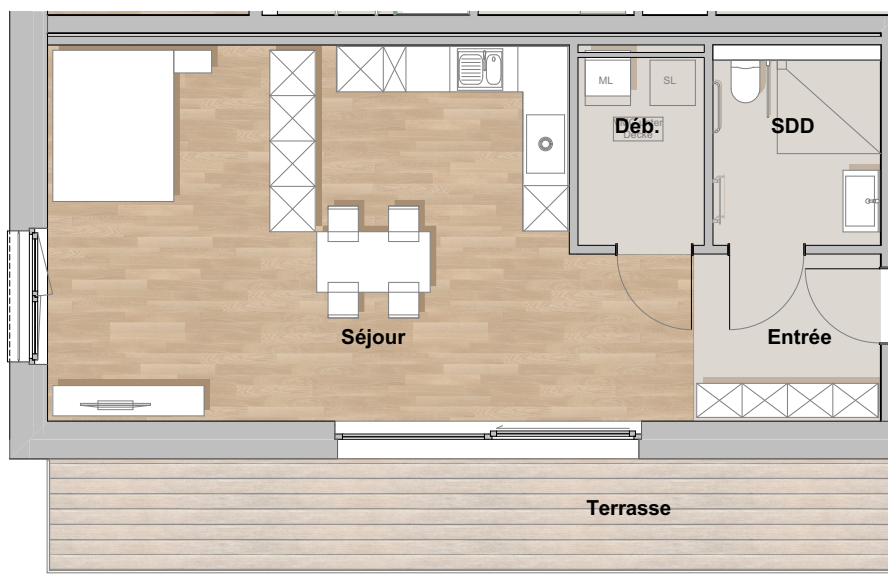
Appartement
A - N1 - 1
SOLID



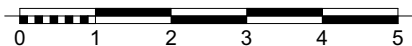
Résidence
11, Route de Gilsdorf
L-9234 Diekirch

Étage +1	
Surface habitable:	90.71 m ²
Surface terrasse:	63.40 m ²
Surface cave:	4.99 m ²
Surface parking:	28.01 m ²
Surface jardin:	269.06 m ²

Appartement
A - N1 - 1
SOLID



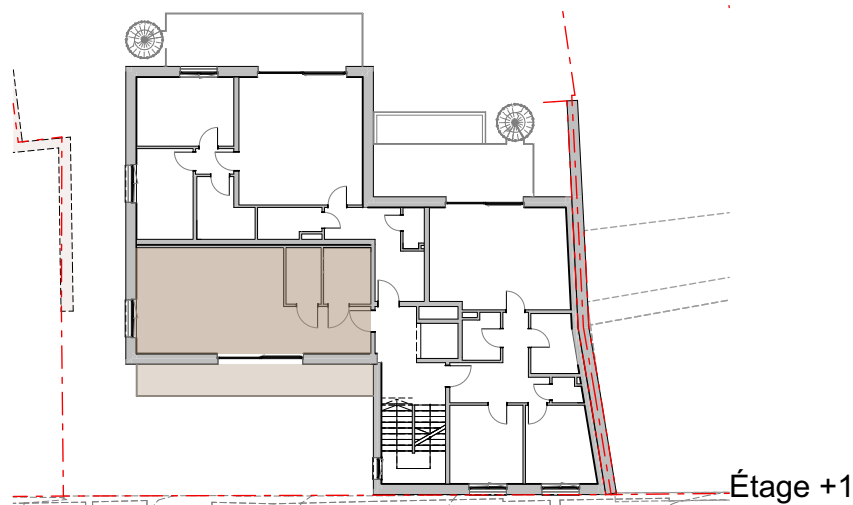
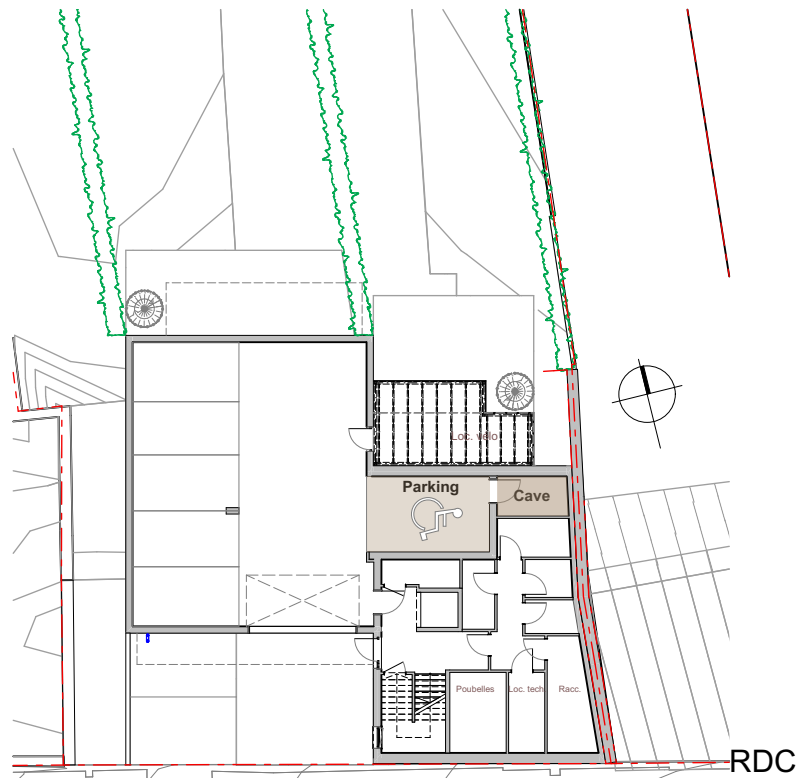
Étage +1



Résidence
11, Route de Gilsdorf
L-9234 Diekirch

Étage +1
Surface habitable: 54.82 m²
Surface terrasse: 16.37 m²
Surface cave: 6.91 m²
Surface parking: 19.53 m²

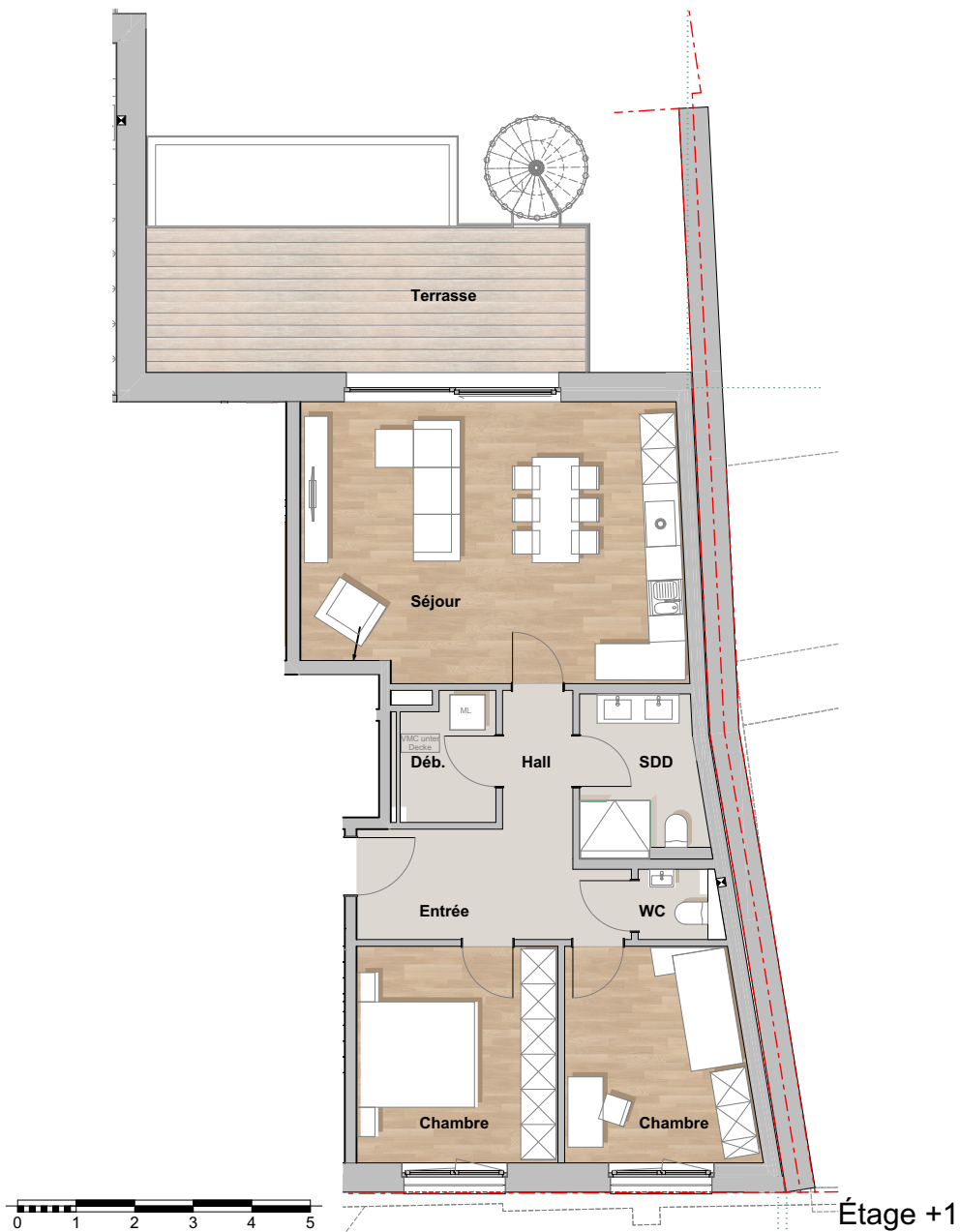
Appartement
A - N1 - 2
SOLID



Résidence
11, Route de Gilsdorf
L-9234 Diekirch

Étage +1	
Surface habitable:	54.82 m ²
Surface terrasse:	16.37 m ²
Surface cave:	6.91 m ²
Surface parking:	19.53 m ²

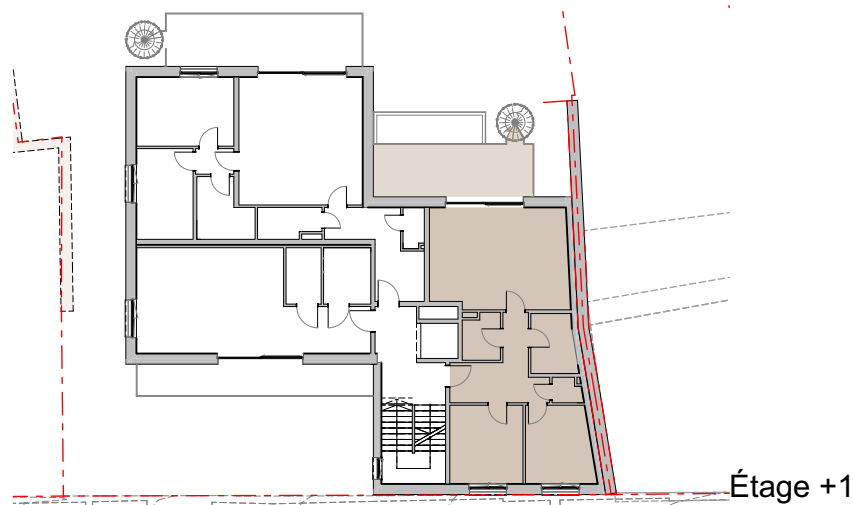
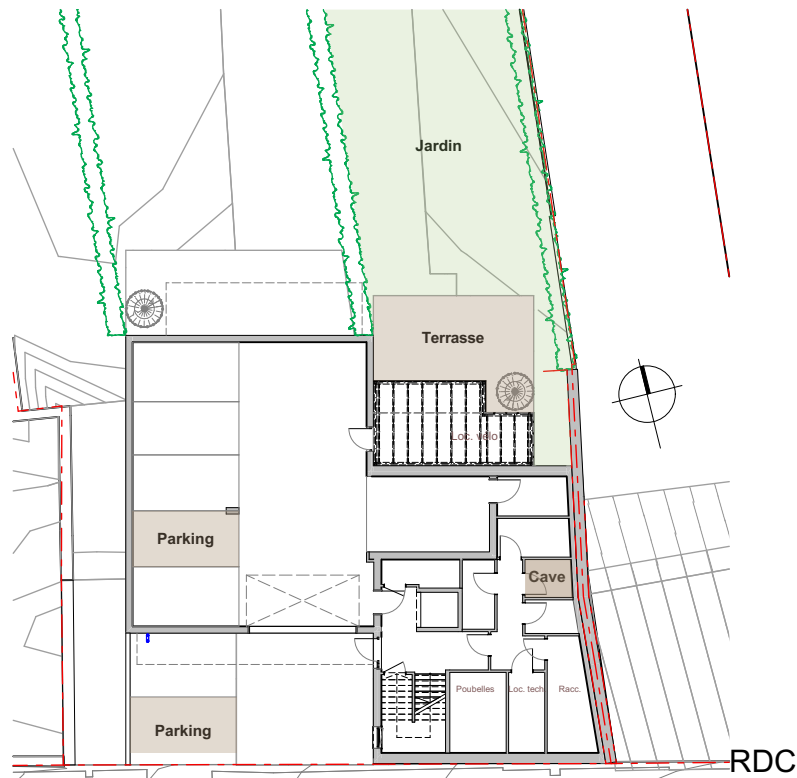
Appartement
A - N1 - 1
SOLID



Résidence
11, Route de Gilsdorf
L-9234 Diekirch

Étage +1	
Surface habitable:	80.17 m ²
Surface terrasse:	49.68 m ²
Surface cave:	4.16 m ²
Surface parking:	28,04 m ²
Surface jardin:	269.23 m ²

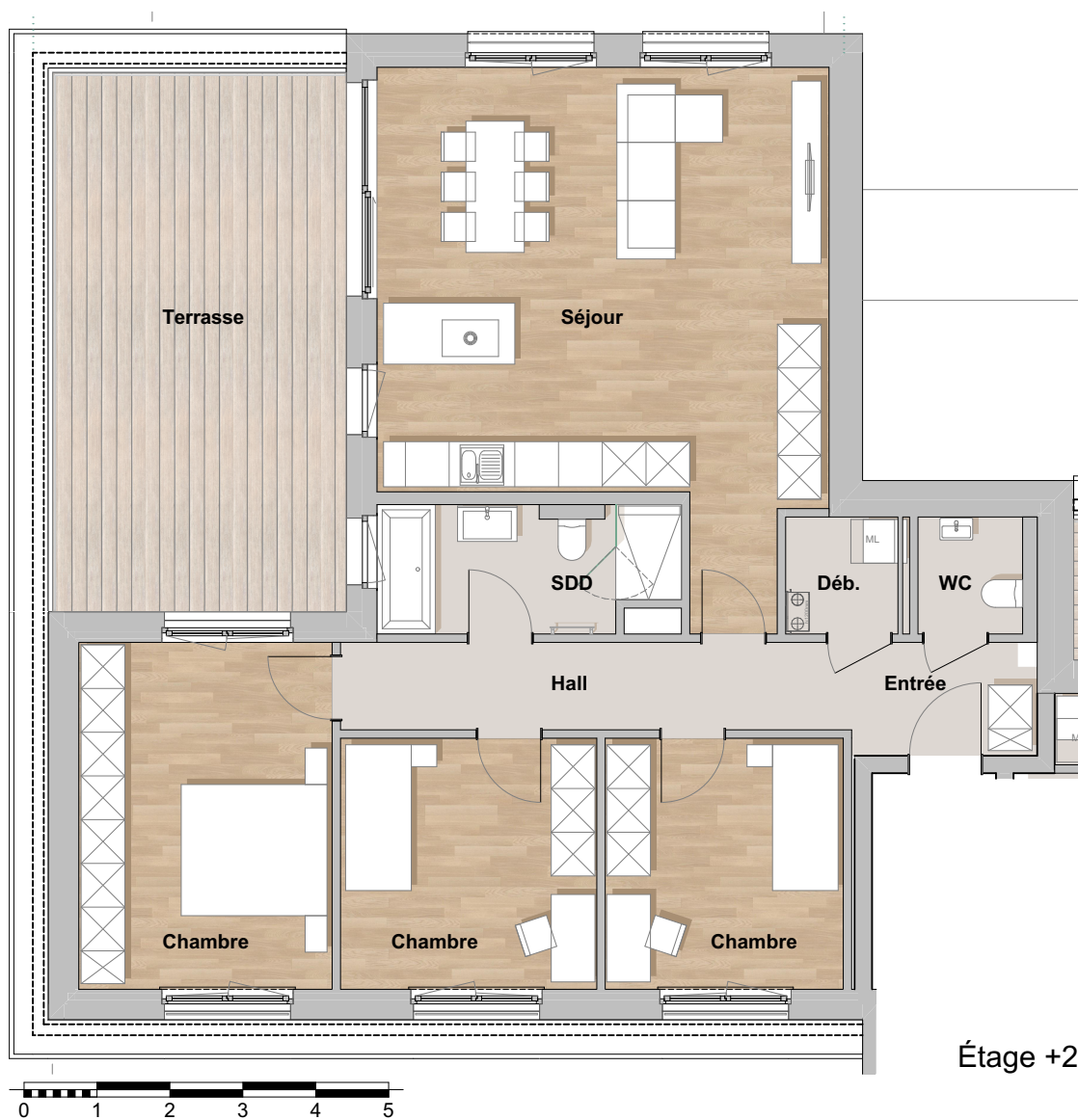
Appartement
A - N1 - 3
SOLID



Résidence
11, Route de Gilsdorf
L-9234 Diekirch

Étage +1	
Surface habitable:	80.17 m ²
Surface terrasse:	49.68 m ²
Surface cave:	4.16 m ²
Surface parking:	28,04 m ²
Surface jardin:	269.23 m ²

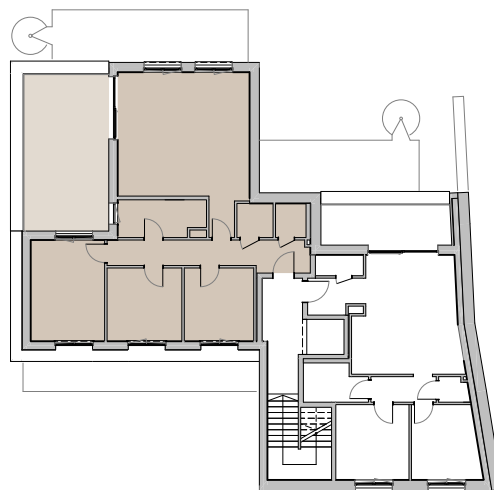
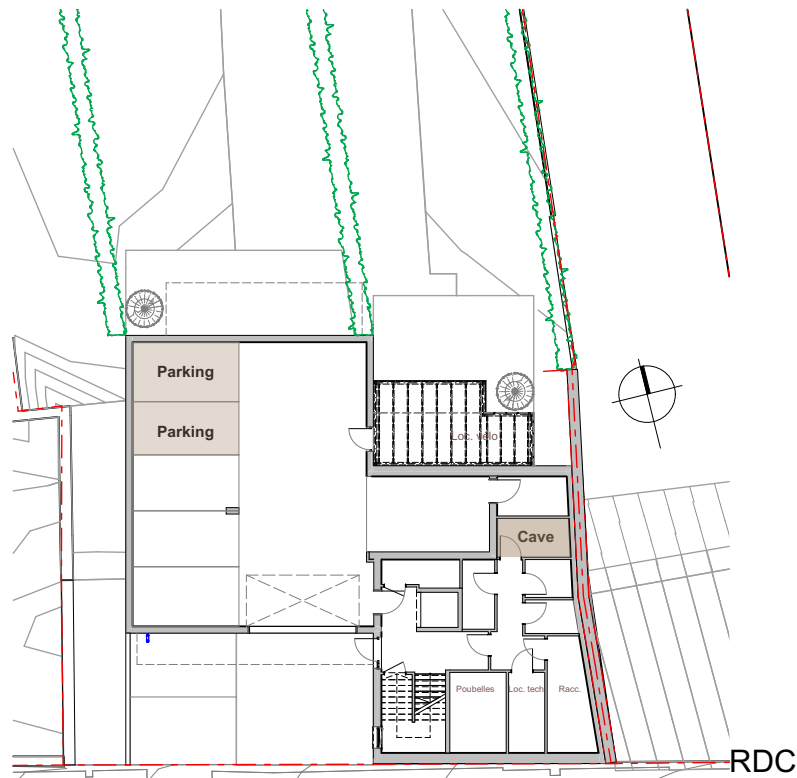
Appartement
A - N1 - 3
SOLID



Résidence
11, Route de Gilsdorf
L-9234 Diekirch

Étage +2
Surface habitable: 107.16 m²
Surface terrasse: 29.59 m²
Surface cave: 7.06 m²
Surface parking: 26.50 m²

Appartement
A - N2 - 4
SOLID

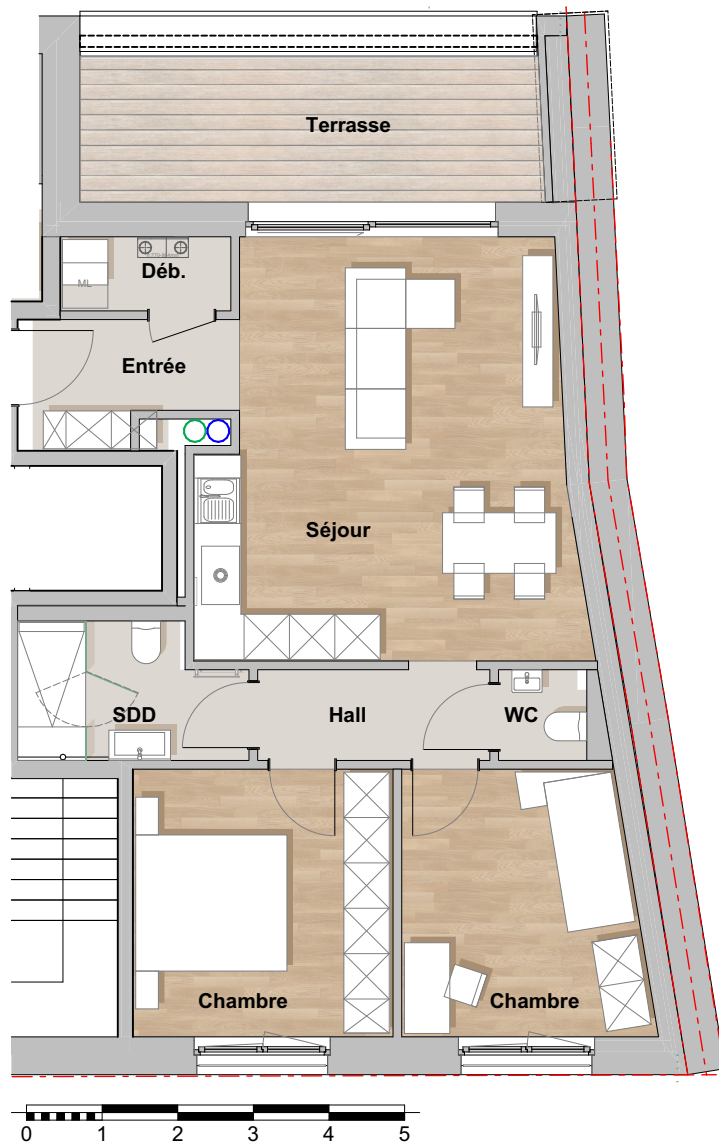


Étage +2

Résidence
11, Route de Gilsdorf
L-9234 Diekirch

Étage +2	
Surface habitable:	107.16 m ²
Surface terrasse:	29.59 m ²
Surface cave:	7.06 m ²
Surface parking:	26.50 m ²

Appartement
A - N2 - 4
SOLID

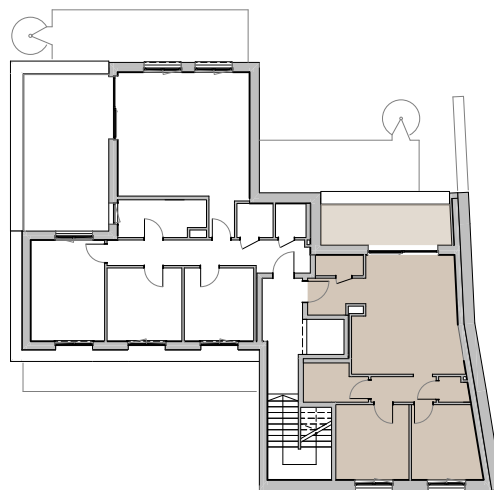
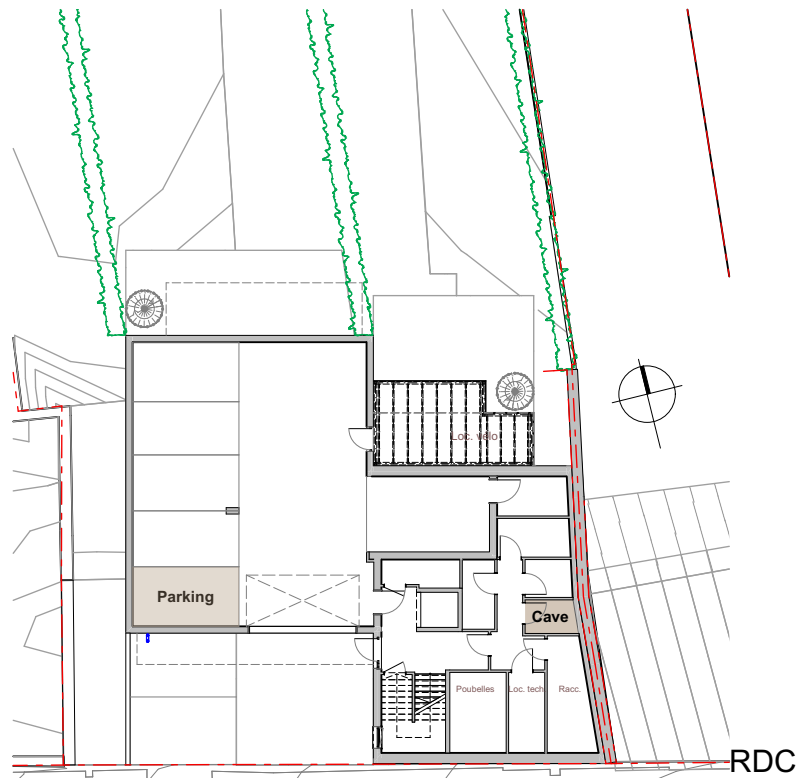


Étage +2

Résidence
11, Route de Gilsdorf
L-9234 Diekirch

Étage +2	
Surface habitable:	69.30 m ²
Surface terrasse:	12.19 m ²
Surface cave:	3.91 m ²
Surface parking:	14.00 m ²

Appartement
A - N2 - 5
SOLID



Étage +2

Résidence
11, Route de Gilsdorf
L-9234 Diekirch

Étage +2	
Surface habitable:	69.30 m ²
Surface terrasse:	12.19 m ²
Surface cave:	3.91 m ²
Surface parking:	14.00 m ²

Appartement
A - N2 - 5
SOLID